

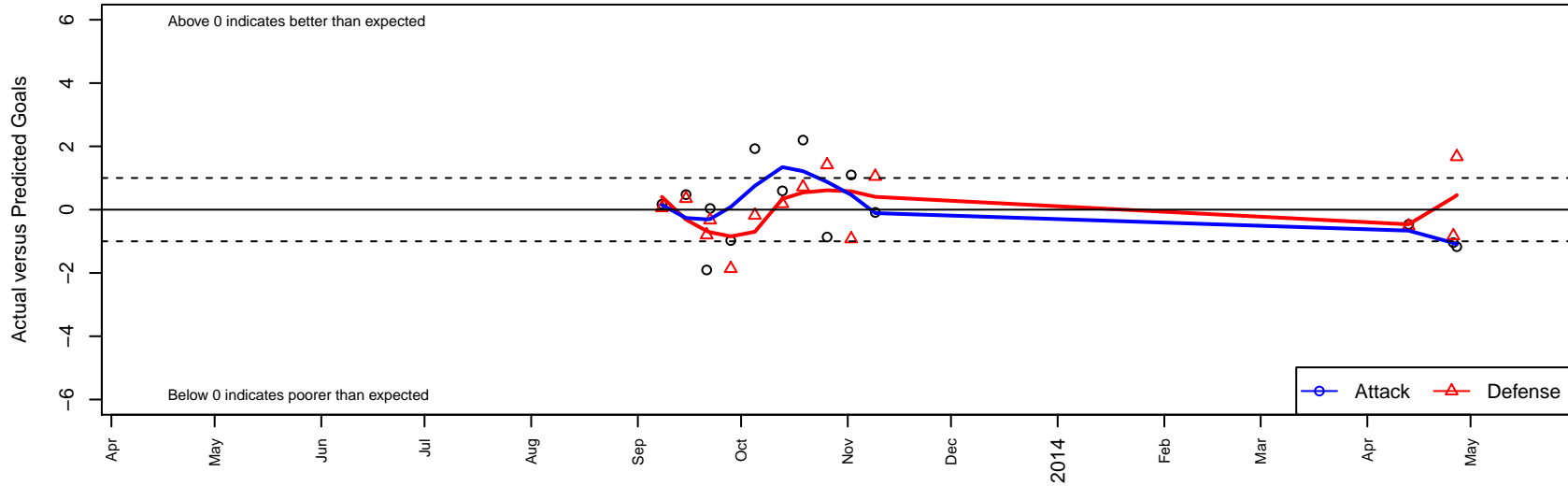
CUSC Blue B98

, CAS
 B98 total strength=1709
 attack=27.13 defense=20.07
 fall league = CSL Premier U15
 alt names used:
 CUSC BLUE 98
 CUSC 98 Blue

Venues played:
 CSL Premier U15
 SoCal National Cup B98



CUSC Blue B98
 Dots are actual minus expected GF (blue circles) and GA (red triangles).
 Blue line is smoothed change in attack strength. Red is smoothed change in defense strength.



	date	home		away		venue	pred.home	pred.away
27015	2014-04-27	CUSC Blue B98	1	FC Golden State Black B98	0	SoCal National Cup B98	2.17	1.67
26857	2014-04-26	Crescenta Valley SC B98	2	CUSC Blue B98	0	SoCal National Cup B98	1.17	1.04
26418	2014-04-13	CUSC Blue B98	2	FC Manchester United Red B98	1	SoCal National Cup B98	2.47	0.48
17895	2013-11-09	CUSC Blue B98	2	Freedom FC B98	0	CSL Premier U15	2.09	1.05
16986	2013-11-02	BYSC Corona United B98	3	CUSC Blue B98	3	CSL Premier U15	2.08	1.90
16086	2013-10-26	CUSC Blue B98	1	CA Premier Capo FC Blue B98	0	CSL Premier U15	1.86	1.42
15149	2013-10-19	CUSC Blue B98	3	DMS11 Academy Gold B98	2	CSL Premier U15	0.80	2.72
14470	2013-10-13	Albion SC White B98	1	CUSC Blue B98	2	CSL Premier U15	1.19	1.41
13101	2013-10-05	CUSC Blue B98	4	CFC Untouchables Black B98	2	CSL Premier U15	2.07	1.82
12136	2013-09-28	Oceanside Breakers Black B98	3	CUSC Blue B98	0	CSL Premier U15	1.14	0.98
11512	2013-09-22	Tustin United Red B98	1	CUSC Blue B98	2	CSL Premier U15	0.67	1.96
11205	2013-09-21	CUSC Blue B98	1	Fullerton Rangers White B98	2	CSL Premier U15	2.91	1.20
10540	2013-09-15	FC Golden State Academy B98	2	CUSC Blue B98	1	CSL Premier U15	2.35	0.52
9576	2013-09-08	Oxnard AC Blue B98	1	CUSC Blue B98	2	CSL Premier U15	1.06	1.83